

XTREME ACCESSORIES

UNDER CONCRETE SLAB VAPOR BARRIER

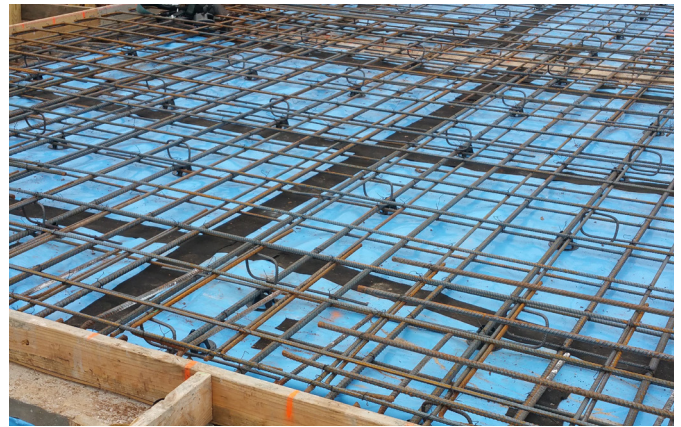
MASTER FORMAT #033000 - VAPOR BARRIER



XTREME GRIP BACK TAPE

DESCRIPTION

Xtreme Grip Back Tape is composed of a self-adhering high performance polymer asphalt adhesive with a composite backing that bonds to concrete with incredible strength. Xtreme Grip Back Tape is designed to seal the seams of the Xtreme Vapor Barrier and mechanically bond the concrete and Xtreme Vapor Barrier. It may also be used to repair penetrations coming through the slab and make small repairs.



INSTALLATION

Prior to installation of Xtreme Grip Back Tape, perform a visual inspection of the project. Ensure the Xtreme Vapor Barrier is overlapped six inches. All dust, dirt, debris, moisture must be removed before installation of Xtreme Grip Back Tape. Xtreme Grip Back Tape may also be used in additional areas where support may be needed. These areas need to be determined by Architect, Engineer, or other personnel.

Slab Penetration: You can install the Xtreme Grip Back Tape on small openings around penetrations that consist of 1 inch or smaller. For larger openings around penetrations, cut out a minimum of twelve inches and one-half times the penetration circumference, using Xtreme Vapor Barrier. Cut slits in the boot half the width of the film. Slide the boot over the penetration. The boot is to be in flat and firm contact with the Xtreme Vapor Barrier. It is important to tape the boot and the penetration and around the base.



SINCE 1952

P.O. BOX 58 CHANNELVIEW, TEXAS 77530

O. 281.452.5961 F. 281.452.5642 WWW.TEX-TRUDE.COM

©TEX-TRUDE 2016 ISO 9001-2008



MADE IN THE U.S.A

Storage: Store out of direct sunlight.

Warm conditions: Perform normal installation, using industry knowledge of the guidelines for Vapor Barriers.

Cold conditions: For cold weather applications, we suggested to condition the tape in a warm environment 8 hours prior to use. This will help the tape reach its best performance.

TECHNICAL DATA

Technical Data Xtreme Grip Back Tape		Packaging Xtreme Grip Back Tape	
Thickness	66 mil	Size	6"x 200'
Peel Adhesion	70 lb f/in	Weight	14 lb ea.
Permeance	0.02	Rolls Per Case	2
Cold Weather Resistance	Excellent	Color	Black

LIMITED WARRANTY

Tex-Trude warrants this product to meet the published specifications and to be free of defects in workmanship and materials at the time of shipment from our factory. If any Xtreme material proves to contain manufacture defects that substantially affect the performance, then Tex-Trude will at their option replace the material or refund the purchase price. This limited warranty is the only warranty offered by Tex-Trude, LP as it relates to Xtreme products. There are no other warranties, including the implied warranties of merchantability or fitness for a particular purpose. Tex-Trude specifically disclaims liability for any incidental, consequential, or other damages.



P.O. BOX 58 CHANNELVIEW, TEXAS 77530
O. 281.452.5961 F. 281.452.5642 WWW.TEX-TRUDE.COM
©TEX-TRUDE 2016 ISO 9001-2008



MADE IN THE U.S.A