



SINCE 1952

YOUR RELIABLE SOURCE FOR POLYETHYLENE
AND PVC PRODUCTS SINCE 1952

CONCRETE ACCESSORIES

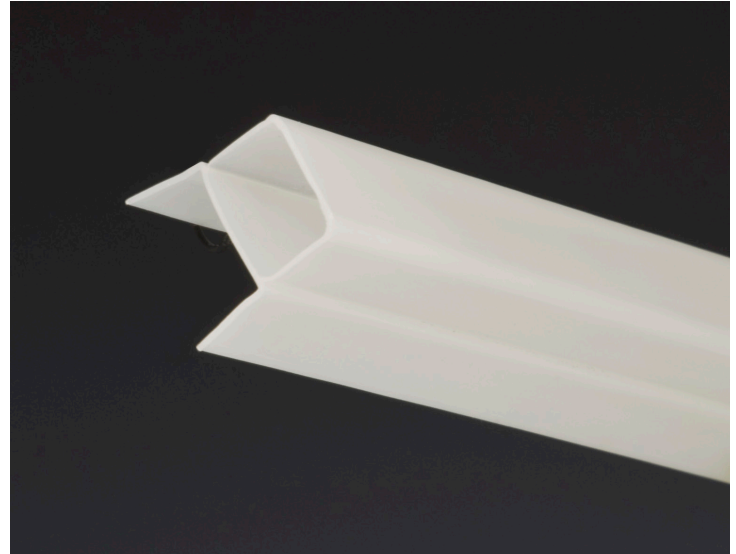
EXPANSION CAPS

Expansion joint caps are polystyrene caps with removable tops. When placed over an expansion joint, the top of the concrete cap snaps off, leaving a clean joint ready for sealing.

Expansion joint caps are available in 1/2" and 3/4" pieces. The 1/2" pieces are 10 ft. long and packaged 100 pieces to a box. The 3/4" pieces are 10 ft. long and packaged 50 pieces to a box.

DETAILS

- Lightweight yet durable
- Time saving and cost effective
- Environmentally accepted
- Acts as a barrier preventing chemical seepage to the concrete surface



EXPANSION CAP SPECIFICATIONS

ASTM D266	Izod Impact, Notched
ASTM D523	Gloss
ASTM D638	Tensile Strength, Yield Elongation at Break Tensile Modulus
ASTM D648	Deflection Temperature @ 1.8MPa (264psi)
ASTM D790	Flexural Modulus Flexural Strength
ASTM D1233	Melt Flow
ASTM D1525	Vicat Softening Point

